



## AK4210/..-11.5-H-baGY

2- to n-poles

## Technical Data

Wire Sizes		Insulating Material	
Solid min	0.2 mm <sup>2</sup>	Material	PA 6.6
Solid max	10.0 mm <sup>2</sup>	Flammability Class	UL 94 V-0
Stranded (flexible) min		<b>Temperatures</b>	
Stranded (flexible) max	6.0 mm <sup>2</sup>	Operating Temperature	-30 °C - 105 °C
Stranded with Ferrule min	0.25 mm <sup>2</sup>	<b>Wave Soldering Process</b>	
Stranded with Ferrule max	6.0 mm <sup>2</sup>	Soldering Temperature, recommended	265 °C
<b>Dimensions</b>		Peak Soldering Time, recommended	3 s / 10 s
Stripped Length	15.0 mm	<b>Reflow Process</b>	
PCB Hole Diameter	2.1 mm	Soldering Temperature, recommended	-
<b>Materials</b>		Peak Soldering Time, recommended	-
Solder Tag	Copper Alloy		
Clamp Spring	Stainless Steel		

## Colours


■ BASALT GREY, RAL 7012      ■ BLACK, RAL 9011

Colours according to RAL, there may be variations on colour due to production conditions. Special colours on request.

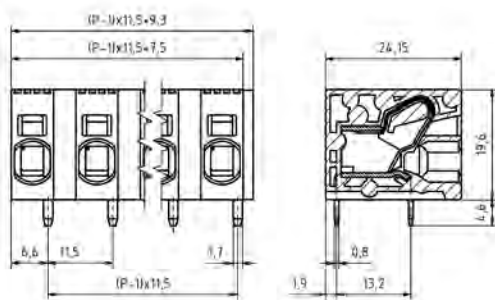
## Order Data (Spacing 11.5 mm)

Poles	Width (mm)	Article Designation	Article Number	PU
2	20.75	AK4210/2-11.5-H-baGY	54210020651D	50
3	32.25	AK4210/3-11.5-H-baGY	54210030651D	50
4	43.75	AK4210/4-11.5-H-baGY	54210040651D	50
5	55.25	AK4210/5-11.5-H-baGY	54210050651D	50
6	66.75	AK4210/6-11.5-H-baGY	54210060651D	50
7	78.25	AK4210/7-11.5-H-baGY	54210070651D	50
8	89.75	AK4210/8-11.5-H-baGY	54210080651D	50
9	101.25	AK4210/9-11.5-H-baGY	54210090651D	50
10	112.75	AK4210/10-11.5-H-baGY	54210100651D	50
11	124.25	AK4210/11-11.5-H-baGY	54210110651D	50
12	135.75	AK4210/12-11.5-H-baGY	54210120651D	50



## Accessories

Figure	Designation	Article Number
	Spacer SPC-AK4210-H-baGY	54210000000

See pages 282 ff for detail and general accessories and see pages 12/13 concerning services.



## Ratings

Usegroup	c 				
	B	C	D	1000 V	
Rated Voltage	600 V	600 V	600 V	1000 V	
Rated Current	35 A	35 A	5 A	41 A	
Overvoltage Category				III	
Rated Wire Size				min	max
solid	AWG 24-8	AWG 24-8	AWG 24-8	0.2 mm <sup>2</sup>	10.0 mm <sup>2</sup>
stranded	AWG 24-8	AWG 24-8	AWG 24-8	0.2 mm <sup>2</sup>	6.0 mm <sup>2</sup>
Test Voltage	2.2 kV	2.2 kV	2.2 kV	3.5 kV	