

AK104/..DS-5.0-V-GREY



Technical Data

Wire Sizes		Insulating Material	
Solid min	0.2 mm ²	Material	PA 6.6
Solid max	4.0 mm ²	Flammability Class	UL 94 V-0
Stranded (flexible) min	0.2 mm ²	Temperatures	
Stranded (flexible) max	4.0 mm ²	Operating Temperature	-30 °C - 105 °C
Stranded with Ferrule min	0.2 mm ²	Wave Soldering Process	
Stranded with Ferrule max	2.5 mm ²	Soldering Temperature, recommended	265 °C
Dimensions		Peak Soldering Time, recommended	3 s / 10 s
Stripped Length	7.0 mm	Reflow Process	
PCB Hole Diameter	2.0 mm	Soldering Temperature, recommended	-
Materials		Peak Soldering Time, recommended	-
Clamp	Brass		
Wire Guard	Stainless Steel		
Screw	Steel		

Colours




■ GREY, RAL 7016

Colours according to RAL, there may be variations on colour due to production conditions. Special colours on request.

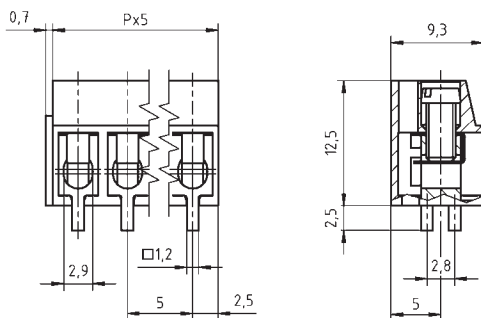
Order Data (Spacing 5.0 mm)

Poles	Width (mm)	Article Designation	Article Number	PU
2	10.70	AK104/2DS-5.0-V-GREY	50104020070G	250
3	15.70	AK104/3DS-5.0-V-GREY	50104030070G	250
4	20.70	AK104/4DS-5.0-V-GREY	50104040070G	250
5	25.70	AK104/5DS-5.0-V-GREY	50104050070G	250
6	30.70	AK104/6DS-5.0-V-GREY	50104060070F	200
7	35.70	AK104/7DS-5.0-V-GREY	50104070070F	200
8	40.70	AK104/8DS-5.0-V-GREY	50104080070E	100
9	45.70	AK104/9DS-5.0-V-GREY	50104090070E	100
10	50.70	AK104/10DS-5.0-V-GREY	50104100070E	100
11	55.70	AK104/11DS-5.0-V-GREY	50104110070E	100
12	60.70	AK104/12DS-5.0-V-GREY	50104120070E	100

Accessories

Figure	Designation	Article Number
	Bridge, 2-pole, insulated, BR/2-5.0/5.08-LIGHT GREY	50000000006
	Bridge, 3-pole, insulated, BR/3-5.0/5.08-LIGHT GREY	50000000007
	Bridge, 2-pole, BR/2-5.0/5.08-L7.0	50000000008

See pages 282 ff for detail and general accessories and see pages 12/13 concerning services.



Ratings



Usegroup	B		C		D	
	300 V	150 V	300 V	150 V	300 V	250 V
Rated Voltage	300 V	150 V	300 V	150 V	300 V	250 V
Rated Current	20 A	20 A	20 A	20 A	10 A	32 A
Rated Wire Size					min	max
	solid	AWG 22-12	AWG 22-12	AWG 22-12	0.5 mm ²	4.0 mm ²
	stranded	AWG 22-12	AWG 22-12	AWG 22-12	0.5 mm ²	4.0 mm ²
Torque	0.80 Nm		0.80 Nm		0.80 Nm	
Screw Size	M3		M3		M3	
Test Voltage	1.6 kV		1.3 kV		1.6 kV	