



AK4191/..KD-2.5-PEBBLE GREY

1- to n-poles

Technical Data

Wire Sizes		Insulating Material	
Solid min	0.14 mm ²	Material	PA 6.6
Solid max	0.75 mm ²	Flammability Class	UL 94 V-0
Stranded (flexible) min	0.14 mm ²	Temperatures	
Stranded (flexible) max	0.75 mm ²	Operating Temperature	-30 °C - 105 °C
Stranded with Ferrule min	0.14 mm ²	Wave Soldering Process	
Stranded with Ferrule max	0.34 mm ²	Soldering Temperature, recommended	265 °C
Dimensions		Peak Soldering Time, recommended	3 s / 10 s
Stripped Length	9.0 mm	Reflow Process	
PCB Hole Diameter	1.2 mm	Soldering Temperature, recommended	-
Materials		Peak Soldering Time, recommended	-
Contact Pin	Bronze		

Colours


	PEBBLE GREY, RAL 7032		ORANGE, RAL 2011
	BLUE, RAL 5015		LIGHT GREEN, similar RAL 6018

Colours according to RAL, there may be variations on colour due to production conditions. Special colours on request.

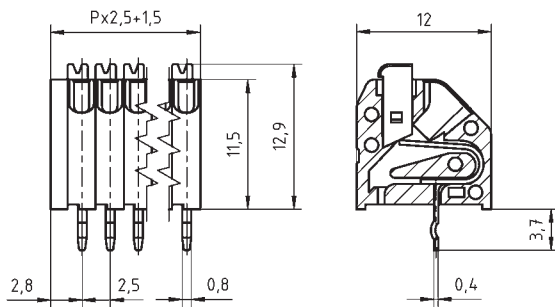
Order Data (Spacing 2.5 mm)

Poles	Width (mm)	Article Designation	Article Number	PU
1	4.00	AK4191/1KD-2.5-PEBBLE GREY	54191010001G	250
2	6.50	AK4191/2KD-2.5-PEBBLE GREY	54191020001F	200
3	9.00	AK4191/3KD-2.5-PEBBLE GREY	54191030001F	200
4	11.50	AK4191/4KD-2.5-PEBBLE GREY	54191040001F	200
5	14.00	AK4191/5KD-2.5-PEBBLE GREY	54191050001E	100
6	16.50	AK4191/6KD-2.5-PEBBLE GREY	54191060001E	100
7	19.00	AK4191/7KD-2.5-PEBBLE GREY	54191070001E	100
8	21.50	AK4191/8KD-2.5-PEBBLE GREY	54191080001D	50
9	24.00	AK4191/9KD-2.5-PEBBLE GREY	54191090001D	50
10	26.50	AK4191/10KD-2.5-PEBBLE GREY	54191100001D	50
11	29.00	AK4191/11KD-2.5-PEBBLE GREY	54191110001D	50
12	31.50	AK4191/12KD-2.5-PEBBLE GREY	54191120001D	50

Accessories

Figure	Designation	Article Number
	Spacer SPC-AK4191-PEBBLE GREY	54191000000

See pages 282 ff for detail and general accessories and see pages 12/13 concerning services.



Ratings



Usegroup	B	C	D		
Rated Voltage	150 V	-	150 V	130 V	
Rated Current	2 A	-	2 A	2 A	
Rated Wire Size			min		max
solid	AWG 26-20	-	AWG 26-20	0.2 mm ²	0.75 mm ²
stranded	AWG 26-20	-	AWG 26-20	0.2 mm ²	0.75 mm ²
Test Voltage	1.3 kV	-	1.3 kV	1.25 kV	