

AK500/..DS-10.0-H-GREY AKZ500/..DS-10.16-H-GREY



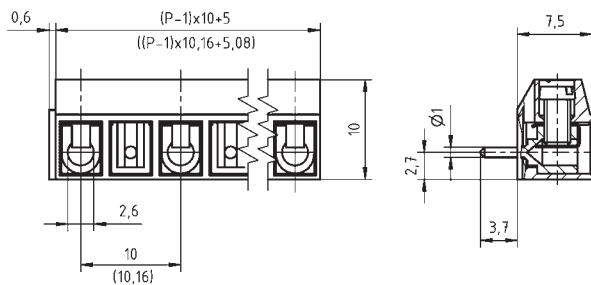
Technical Data

Wire Sizes		Insulating Material	
Solid min	0.2 mm ²	Material	PA 6.6
Solid max	1.5 mm ²	Flammability Class	UL 94 V-0
Stranded (flexible) min	0.2 mm ²	Temperatures	
Stranded (flexible) max	1.5 mm ²	Operating Temperature	-30 °C - 105 °C
Stranded with Ferrule min	0.2 mm ²	Wave Soldering Process	
Stranded with Ferrule max	1.5 mm ²	Soldering Temperature, recommended	265 °C
Dimensions		Peak Soldering Time, recommended	3 s / 10 s
Stripped Length	5.0 mm	Reflow Process	
PCB Hole Diameter	1.3 mm	Soldering Temperature, recommended	-
Materials		Peak Soldering Time, recommended	-
Clamp	Brass		
Wire Guard	Stainless Steel		
Screw	Steel		

Colours

■ GREY, RAL 7016 ■ BLUE, RAL 5015

Colours according to RAL, there may be variations on colour due to production conditions. Special colours on request.



Order Data (Spacing 10.0 mm)

Poles	Width (mm)	Article Designation	Article Number	PU
2	15.60	AK500/2DS-10.0-H-GREY	50500020241G	250
3	25.60	AK500/3DS-10.0-H-GREY	50500030241G	250
4	35.60	AK500/4DS-10.0-H-GREY	50500040241G	250
5	45.60	AK500/5DS-10.0-H-GREY	50500050241E	100
6	55.60	AK500/6DS-10.0-H-GREY	50500060241E	100
7	65.60	AK500/7DS-10.0-H-GREY	50500070241D	50
8	75.60	AK500/8DS-10.0-H-GREY	50500080241D	50
9	85.60	AK500/9DS-10.0-H-GREY	50500090241D	50
...
12	115.60	AK500/12DS-10.0-H-GREY	50500120241D	50

Order Data (Spacing 10.16 mm)

Poles	Width (mm)	Article Designation	Article Number	PU
2	15.84	AKZ500/2DS-10.16-H-GREY	50500020251G	250
3	26.00	AKZ500/3DS-10.16-H-GREY	50500030251G	250
4	36.16	AKZ500/4DS-10.16-H-GREY	50500040251G	250
5	46.32	AKZ500/5DS-10.16-H-GREY	50500050251E	100
6	56.48	AKZ500/6DS-10.16-H-GREY	50500060251E	100
7	66.64	AKZ500/7DS-10.16-H-GREY	50500070251D	50
8	76.80	AKZ500/8DS-10.16-H-GREY	50500080251D	50
9	86.96	AKZ500/9DS-10.16-H-GREY	50500090251D	50
...
12	117.44	AKZ500/12DS-10.16-H-GREY	50500120251D	50

Ratings

Usegroup	cULus			VDE	
	B	C	D		
Rated Voltage	300 V	150 V	300 V	750 V	
Rated Current	15 A	15 A	10 A	17.5 A	
Rated Wire Size				min	max
	solid	AWG 22-14	AWG 22-14	AWG 22-14	0.5 mm ² / 1.5 mm ²
	stranded	AWG 22-14	AWG 22-14	AWG 22-14	0.5 mm ² / 1.5 mm ²
Torque	0.40 Nm			0.40 Nm	
Screw Size	M2.6			M2.6	
Test Voltage	1.6 kV			1.6 kV / 3.5 kV	