

AK350/..-10.0-H-GREEN-HC

AKZ350/..-10.16-H-GREEN-HC



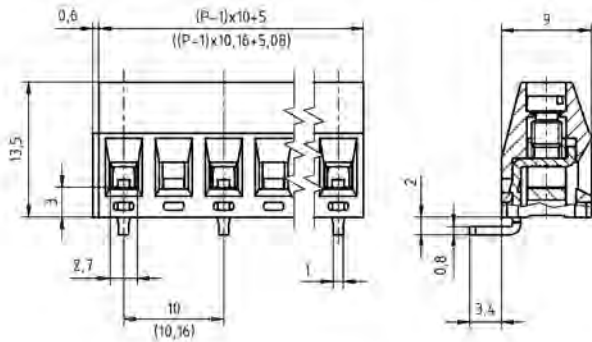
Technical Data

Wire Sizes		Insulating Material	
Solid min	0.14 mm ²	Material	PA 6.6
Solid max	2.5 mm ²	Flammability Class	UL 94 V-0
Stranded (flexible) min	0.14 mm ²	Temperatures	
Stranded (flexible) max	1.5 mm ²	Operating Temperature	-30 °C - 105 °C
Stranded with Ferrule min	0.25 mm ²	Wave Soldering Process	
Stranded with Ferrule max	1.5 mm ²	Soldering Temperature, recommended	265 °C
Dimensions		Peak Soldering Time, recommended	3 s / 10 s
Stripped Length	6.0 mm	Reflow Process	
PCB Hole Diameter	1.3 mm	Soldering Temperature, recommended	-
Materials		Peak Soldering Time, recommended	-
Clamp	Brass		
Screw	Steel		
Solder Tag	Copper Alloy		

Colours

	GREEN, RAL 6018		LIGHT GREY, RAL 7035
	BLUE, RAL 5015		LIGHT GREEN, similar RAL 6018

Colours according to RAL, there may be variations on colour due to production conditions. Special colours on request.



Order Data (Spacing 10.0 mm)

Poles	Width (mm)	Article Designation	Article Number	PU
2	15.60	AK350/2-10.0-H-GREEN-HC	50350020226F	200
3	25.60	AK350/3-10.0-H-GREEN-HC	50350030226F	200
4	35.60	AK350/4-10.0-H-GREEN-HC	50350040226E	100
5	45.60	AK350/5-10.0-H-GREEN-HC	50350050226E	100
6	55.60	AK350/6-10.0-H-GREEN-HC	50350060226D	50
7	65.60	AK350/7-10.0-H-GREEN-HC	50350070226D	50
8	75.60	AK350/8-10.0-H-GREEN-HC	50350080226D	50
9	85.60	AK350/9-10.0-H-GREEN-HC	50350090226D	50
...
12	115.60	AK350/12-10.0-H-GREEN-HC	50350120226D	50

Order Data (Spacing 10.16 mm)

Poles	Width (mm)	Article Designation	Article Number	PU
2	15.84	AKZ350/2-10.16-H-GREEN-HC	50350020229F	200
3	26.00	AKZ350/3-10.16-H-GREEN-HC	50350030229F	200
4	36.16	AKZ350/4-10.16-H-GREEN-HC	50350040229E	100
5	46.32	AKZ350/5-10.16-H-GREEN-HC	50350050229E	100
6	56.48	AKZ350/6-10.16-H-GREEN-HC	50350060229D	50
7	66.64	AKZ350/7-10.16-H-GREEN-HC	50350070229D	50
8	76.80	AKZ350/8-10.16-H-GREEN-HC	50350080229D	50
9	86.96	AKZ350/9-10.16-H-GREEN-HC	50350090229D	50
...
12	117.44	AKZ350/12-10.16-H-GREEN-HC	50350120229D	50

Ratings

Usegroup	c RALUS			VDE	
	B	C	D	1000 V	
Rated Voltage	300 V	150 V	300 V	1000 V	
Rated Current	19 A	19 A	10 A	24 A	
Rated Wire Size				min	max
	solid	AWG 22-12	AWG 22-12	AWG 22-12	0.5 mm ² / 2.5 mm ²
	stranded	AWG 22-12	AWG 22-12	AWG 22-12	0.5 mm ² / 1.5 mm ²
Torque	0.50 Nm		0.50 Nm	0.50 Nm	
Screw Size	M3		M3	M3	
Test Voltage	1.6 kV		1.3 kV	1.6 kV / 3.5 kV	