



## AK4200/..-7.5-H-baGY

2- to n-poles

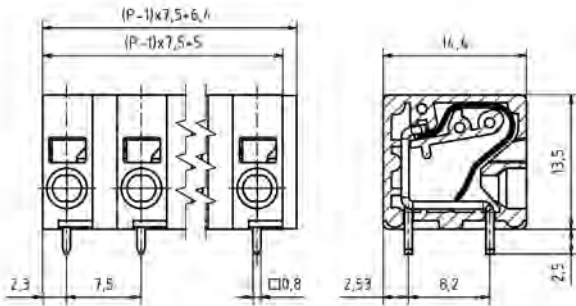
## Technical Data

Wire Sizes		Insulating Material	
Solid min	0.2 mm <sup>2</sup>	Material	PA 6.6
Solid max	4.0 mm <sup>2</sup>	Flammability Class	UL 94 V-0
Stranded (flexible) min	0.2 mm <sup>2</sup>	<b>Temperatures</b>	
Stranded (flexible) max	2.5 mm <sup>2</sup>	Operating Temperature	-30 °C - 105 °C
Stranded with Ferrule min	0.2 mm <sup>2</sup>	<b>Wave Soldering Process</b>	
Stranded with Ferrule max	2.5 mm <sup>2</sup>	Soldering Temperature, recommended	265 °C
<b>Dimensions</b>		Peak Soldering Time, recommended	3 s / 10 s
Stripped Length	10.0 mm	<b>Reflow Process</b>	
PCB Hole Diameter	1.1 mm	Soldering Temperature, recommended	-
<b>Materials</b>		Peak Soldering Time, recommended	-
Solder Tag	Copper Alloy		
Clamp Spring	Stainless Steel		

## Colours

■ BASALT GREY, RAL 7012      ■ BLACK, RAL 9011

Colours according to RAL, there may be variations on colour due to production conditions. Special colours on request.



## Order Data (Spacing 7.5 mm)

Poles	Width (mm)	Article Designation	Article Number	PU
2	13.90	AK4200/2-7.5-H-baGY	54200020551D	50
3	21.40	AK4200/3-7.5-H-baGY	54200030551D	50
4	28.90	AK4200/4-7.5-H-baGY	54200040551D	50
5	36.40	AK4200/5-7.5-H-baGY	54200050551D	50
6	43.90	AK4200/6-7.5-H-baGY	54200060551D	50
7	51.40	AK4200/7-7.5-H-baGY	54200070551D	50
8	58.90	AK4200/8-7.5-H-baGY	54200080551D	50
9	66.40	AK4200/9-7.5-H-baGY	54200090551D	50
10	73.90	AK4200/10-7.5-H-baGY	54200100551D	50
11	81.40	AK4200/11-7.5-H-baGY	54200110551D	50
12	88.90	AK4200/12-7.5-H-baGY	54200120551D	50

## Accessories

Figure	Designation	Article Number
	Spacer SPC-AK4200-baGY	54200000000
	Side Wall with Coding Pin SW-AK4200-CP-H-baGY	54200000003

See pages 282 ff for detail and general accessories and see pages 12/13 concerning services.

## Ratings

Usegroup	c ALUS			VDE	
	B	C	D	750 V	
Rated Voltage	300 V	150 V	300 V	750 V	
Rated Current	20 A	20 A	10 A	24 A	
Overvoltage Category				III	
Rated Wire Size			min		max
	solid	AWG 24-12	AWG 24-12	AWG 24-12	0.2 mm <sup>2</sup> 2.5 mm <sup>2</sup>
	stranded	AWG 24-12	AWG 24-12	AWG 24-12	0.2 mm <sup>2</sup> 2.5 mm <sup>2</sup>
Test Voltage	1.6 kV	1.3 kV	1.6 kV	3.0 kV	